

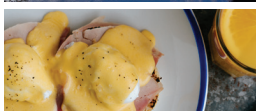


# THE BOAT HOUSE CAFÉ

CHICHESTER MARINA



*come for  
the food.  
—  
stay for  
the views!*



OPEN FOR BREAKFAST,  
LUNCH AND DINNER  
7 DAYS A WEEK.

AL FRESCO DINING

—  
LOCALLY SOURCED,  
SEASONAL MENU

—  
AFTERNOON TEA



[WWW.THEBOATHOUSECAFE.COM](http://WWW.THEBOATHOUSECAFE.COM)



**BOOK NOW 01243 513203**



This leaflet has been produced by

**Manhood Wildlife &  
Heritage Group**

*Other walks can be  
found on the website*

[mwhg.org.uk/publications](http://mwhg.org.uk/publications)



## Birdham Heritage Trail

2.5 Miles (1 to 12)

or 1.5 Miles (1 to 6 to 12)

Take care on road/lanes (No pavements)

1. St. James Church (14th Century)
2. Triangle Pond & copse (MWHG)
3. Turn footpath right onto footpath (signed)
4. Follow footpath right
5. Westlands Pier View Point
6. Left into Court Barn Lane
7. Birdham Pool (1937) & Tide Mill (1768)
8. Chichester Canal - Salmers Lock (1822)
9. The Boat House Café
10. Egremont Bridge (1820)
11. Previous main road to Chichester
12. Right to return to church or left to Old Bird & Ham Public House (1740) Now private

Use with OS Explorer Map 120

